



RESPONSIBLE • RELIABLE • POWER

MNGS is a Portfolio Company of BP Natural Gas Opportunity Partners, L.P., a Fund Sponsored by T. Boone Pickens

# MESA NATURAL GAS SOLUTIONS

## NATURAL GAS-FIRED GENERATORS

---

### BEST IN RELIABILITY

- Over 95% runtime guarantee
- Over 12,000,000 run hours
- Over 42 years of experience

---

### BEST IN VALUE

- Best prices on Doosan Industrial Engines
- Flexible "Protection Pricing"
- Made in the U.S.A.

---

### BEST IN SERVICE

- 24/7 isn't just a motto, it's our guarantee
- World-class training for every employee
- 60% U.S. Military Veterans







---

## OUR MISSION

---

Utilizing innovative technology and demonstrating relentless attention to detail, Mesa Natural Gas Solutions provides the highest quality flared gas, emissions reduction, and power solutions in North American oil and gas fields. In everything we do, we believe in creating and providing solutions that stay ahead of regulations and that positively impact the environment. We exist to create products that are environmentally responsible, reliable, and save our customers money — from day one.

At Mesa, we emphasize safety, employing veterans, and getting the job done right the first time. With a workforce that has extensive global and military experience, we deliver products and services our customers deserve. We will always strive to do the right thing, at the right time, for the right reasons.

---

## OUR VISION

---

To provide our customers with the most reliable equipment and services available in the oil and gas industry.

---

## OUR PURPOSE

---

Mesa Natural Gas Solutions is an all inclusive power provider. If there is a fuel source, we can power any application, anywhere. In the oil and gas fields of America, we have commonly powered various kinds of lift. Including but not limited to, pump jacks, jet pumps, Rotaflex, ESP's, and hydraulic lift. We have also powered facilities and used flare gas to put power back onto the grid. The bottom line is if you have a power generation need we have a solution.

MNGS is a Portfolio Company of BP Natural Gas Opportunity Partners, L.P., a Fund Sponsored by T. Boone Pickens

.....

RESPONSIBLE

RELIABLE

POWER

---

## WHAT SETS US APART?

---

We believe the “difference-makers” are our people and our technology. These two qualities combined set us apart. We care about what we do and want to earn your business with our industry leading service and technology.

We stand by our product, service, and team. We know the customer comes first and we carry that attitude no matter what the economic climate. Listed below are the facts about Mesa Natural Gas Solutions. This is what sets us apart:

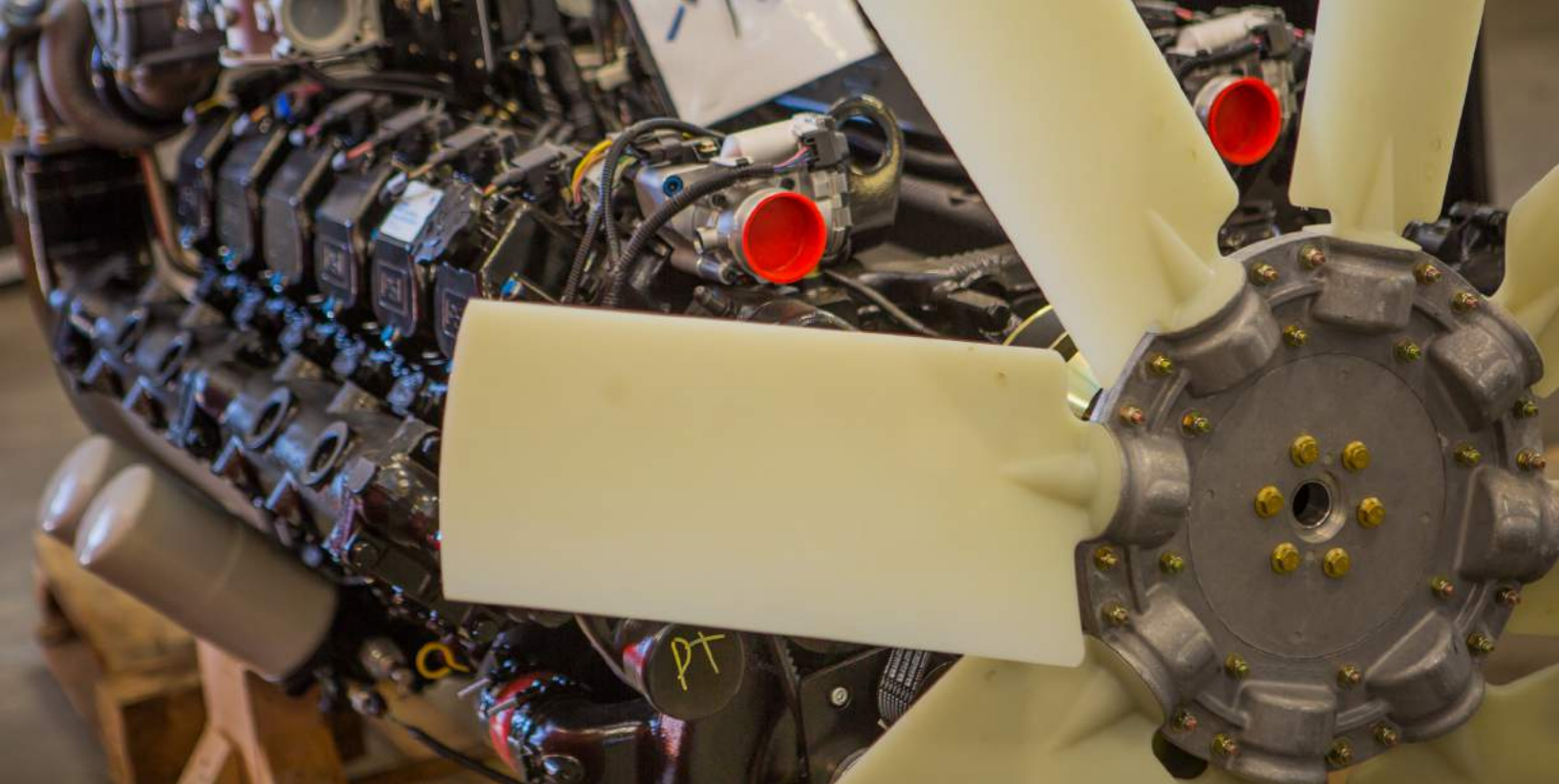
- 
- ▣ Our generators have more field hours than any other supplier in North America. We currently have more than 12,000,000 run hours.
  - ▣ With more than 42 years of oil field service experience, we have learned what it takes to hire and train the best service people in the industry.
  - ▣ We provide power ranging from a few kilowatts to multiple megawatts with turnkey redundancy and paralleling options.
  - ▣ We provide a 95% run-time guarantee on your electrical generators.
  - ▣ Our generators are packaged in Casper, Wyoming (not overseas).
  - ▣ We are a U.S. based company.
  - ▣ We are proud to say our company is currently made up of over 60% US Military Veterans.
  - ▣ Over 85% of our field technicians are U.S. Military.
  - ▣ We invest in technology to stay one step ahead. Winterization, H2S, and telemetry are just a few areas we invest in to stay consistently ahead.
  - ▣ Our low prices and superior reliability make us the best value available to you in the generator business.



“What they’re doing in Casper I think fits very well with some of the legislation I’ve been trying to develop in terms of using natural gas more efficiently.”

*U.S. Senator John Barrasso*

---



---

## OUR SERVICES

---

### How we stand apart

We stand by our promises and simplify power generation & service needs.

#### 24/7 FIELD SERVICE



True round the clock field service with responsive expert technicians.

#### INCLUSIVE PRICING



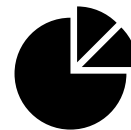
We have all inclusive pricing so you aren't surprised when you see the invoice.

#### SUPERIOR TRAINING



All technicians are trained to build generators prior to going to the field.

#### PROVEN



We stand by our promises and simplify power generation & service needs.

---

# ABOUT US

---

## RELIABILITY MATTERS

in the arduous and ever changing conditions of America's oil and gas fields. We know how important remote power is to your operations.

## TRUE 24/7 FIELD SERVICE

is often talked about, but not followed through on. At Mesa we guarantee our service.

---

### **DISTRIBUTOR**

Mesa serves as the exclusive North American distributor of Moser Energy Systems associated gas powered generators.

### **MAINTENANCE**

Each one of our our techs and mechanics are trained to build units from the ground up at the Moser production facility prior to entering their field training.

### **FIELD SERVICE**

Our expert field service is unparalleled in the industry. Our technicians are reliable experts in their field.

### **ENGINEERING**

Our engineering team works with your team to design solutions that achieve your desired results.





# WE DELIVER EXPERT SERVICE

No matter where the unit is, we offer technical experts to keep you up and running.



---

## STATISTICS

---

### **TWENTY FOUR SEVEN**

Units are serviced anytime/anywhere.

### **10 MILLION**

More run hours on our units than any other in the US.

### **70%**

Percentage of our company are veterans.

### **95%**

Percent runtime guarantee.

---

## SOME THINGS YOU SHOULD KNOW

---

### **<1%**

Our units emit less than 1% of the emissions than their diesel counterpart.

### **2,500 BTU's**

Our units run on gas ranging from 750-2,500 BTUs.

### **DUEL FUEL**

All units run on wellhead gas or liquid propane.

### **100%**

Of our units are cheaper to rent and operate than diesel.



# WE UNDERSTAND

THE CHALLENGES OUR CLIENTS FACE WITH EVER CHANGING REGULATIONS

---

## TIGHTENING REGULATIONS

North Dakota tightening flaring standards

REDUCED NUMBER		REDUCED VOLUME		REDUCED DURATION
35%		300,000	2,000	7,075
percent of gas flared		MCFD flared in the Bakken	wells expected to be drilled in 2014	more wells 2015-2019



---

# FLARING GAS IS A HOT TOPIC

---

## Choosing Natural Gas vs. Diesel-fired Generators

- The choice is a simple one. Powering your site with a natural gas-fired generator reduces emissions by 99% in comparison to diesel-fired generators. All of our US units are EPA-certified.
- Each generator converts wellhead gas directly into power, reducing your reliance on another fuel source, and, therefore, your bottom line. In 2014, one client alone saved more than \$65M in diesel fuel bills.
- We guarantee our units' long and stable run-times. Our generator sets have accrued more than 10,000,000 run hours...and counting.



### BTUs

Our units run successfully on a very wide range of BTUs. The BTUs can be as low as 750 or as high as 2,500 BTUs. In the United States, we see an average of 1,250-1,450 BTUs gas. We have a lot of sites running on over 1,800 BTUs wellhead gas. When running on propane, the units run on 2,500 BTUs gas.

- **70kW** - 11-15 MCF a day
- **125kW** - 16-23 MCF a day
- **225kW** - 21-44 MCF a day
- **350kW** - 46-65 MCF a day

*All are based on 40% and 80% loads respectively*

---

## FLARED/VENTED

---

Natural gas is a waste product that is heavily regulated. We turn this waste product into energy with disruptive, yet simple to use technology.

Additionally, we provide 24/7 service that doesn't quit, and revolutionary pricing that saves you money. Our customer experience takes you from sale to installation and maintenance with ease and expertise. We guarantee a product with more field hours than any other company in North America. Most importantly, we promote clean, responsible, and reliable power.

- Eliminate diesel fuel expenses
- Eliminate transportation and fluid spill expenses
- Reduce emissions
- 10 million+ run hours on wellhead gas to date
- Rich gas operation exceeding up to 2,500 BTUs
- Ability to operate on sour gas locations
- Efficiency in extreme temperature

# 170kW 11L TURBO ENGINE

The 11L turbo charged engine is a U.S. EPA-certified natural gas and propane power unit developed from the block up to be reliable and durable. Built upon a proven marine-grade block, the 6-cylinder inline features replaceable dry liners and water-cooled exhaust.

Superior engine performance is driven by an engine control unit that integrates and coordinates all critical functions including: Governor, Variable Ignition Timing, Air Fuel Ratio Control, Knock Suppression and Engine Protection.

.....



<b>Rated kW</b>	200 kW @ 1,800 rpm
<b>24/7 Prime Power kW (kVA)</b>	170kW (221.5)
<b>Engine Prime Rating HP (kW)</b>	272HP (203)
<b>Generator Rating kW (kVA)</b>	200kW (250)
<b>Maximum AMP Rating</b>	305
<b>Fuel Usage (field gas)</b>	20 Mcf/day at 50%, 30 Mcf/day at 80%
<b>Fuel Usage (propane)</b>	324 gal/day at 50%, 488 gal/day at 80%
<b>Size of Unit</b>	14'x 6'8.5" - tongue is 4'9"
<b>Weight of Unit</b>	8,660 lbs

---

# 225kW 14L TURBO ENGINE

The 14L turbo charged engine is a U.S. EPA-certified natural gas and propane power unit developed from the block up to be reliable and durable. Built upon a proven marine-grade block, the 6-cylinder inline features replaceable dry liners and water-cooled exhaust.

Superior engine performance is driven by an engine control unit that integrates and coordinates all critical functions including: Governor, Variable Ignition Timing, Air Fuel Ratio Control, Knock Suppression and Engine Protection.

.....



<b>Rated kW</b>	300 kW @ 1,800 rpm
<b>24/7 Prime Power kW (kVA)</b>	225kW (281)
<b>Engine Prime Rating HP (kW)</b>	362HP (270)
<b>Generator Rating kW (kVA)</b>	260kW (325)
<b>Maximum AMP Rating</b>	406
<b>Fuel Usage (field gas)</b>	29 Mcf/day at 50%, 45 Mcf/day at 80%
<b>Fuel Usage (propane)</b>	454 gal/day at 50%, 677 gal/day at 80%
<b>Size of Unit</b>	16'x 8'6" - tongue is additional 4'9"
<b>Weight of Unit</b>	11,420 lbs

# 70kW 8L NA ENGINE

The 8L Naturally Aspirated engine is a U.S. EPA-certified natural gas and propane power unit developed from the block up to be reliable and durable. Built upon a proven marine-grade block, the 6-cylinder inline features replaceable dry liners and water-cooled exhaust.

Superior engine performance is driven by an engine control unit that integrates and coordinates all critical functions including: Governor, Variable Ignition Timing, Air Fuel Ratio Control, Knock Suppression and Engine Protection.



<b>Rated kW</b>	75 kW @ 1,800 rpm
<b>24/7 Prime Power kW (kVA)</b>	70kW (87.5)
<b>Engine Prime Rating HP (kW)</b>	106HP (79)
<b>Generator Rating kW (kVA)</b>	125kW (156)
<b>Maximum AMP Rating</b>	119
<b>Fuel Usage (field gas)</b>	9 Mcf/day at 50%, 13 Mcf/day at 80%
<b>Fuel Usage (propane)</b>	144 gal/day at 50%, 206 gal/day at 80%
<b>Size of Unit</b>	14'x 6'8.5" - tongue is 4'9"
<b>Weight of Unit</b>	6,620 lbs

# 125kW 8L TURBO ENGINE

The 8L turbo engine is a U.S. EPA-certified natural gas and propane power unit developed from the block up to be reliable and durable. Built upon a proven marine-grade block, the 6-cylinder inline features replaceable dry liners and water-cooled exhaust.

Superior engine performance is driven by an engine control unit that integrates and coordinates all critical functions including: Governor, Variable Ignition Timing, Air Fuel Ratio Control, Knock Suppression and Engine Protection.



<b>Rated kW</b>	150 kW @ 1,800 rpm
<b>24/7 Prime Power kW (kVA)</b>	125kW (156)
<b>Engine Prime Rating HP (kW)</b>	200HP (149)
<b>Generator Rating kW (kVA)</b>	170kW (212)
<b>Maximum AMP Rating</b>	224
<b>Fuel Usage (field gas)</b>	14 Mcf/day at 50%, 21 Mcf/day at 80%
<b>Fuel Usage (propane)</b>	225 gal/day at 50%, 337 gal/day at 80%
<b>Size of Unit</b>	14'x 6'8.5" - tongue is 4'9"
<b>Weight of Unit</b>	7,500 lbs



# 350kW 22 L TURBO ENGINE

The 22L turbo charged engine is a U.S. EPA-certified natural gas and propane power unit developed from the block up to be reliable and durable. Built upon a proven marine-grade block, the 6-cylinder inline features replaceable dry liners and water-cooled exhaust.

Superior engine performance is driven by an engine control unit that integrates and coordinates all critical functions including: Governor, Variable Ignition Timing, Air Fuel Ratio Control, Knock Suppression and Engine Protection.



<b>Rated kW</b>	430kW @ 1,800 rpm
<b>24/7 Prime Power kW (kVA)</b>	350kW (437.5)
<b>Engine Prime Rating HP (kW)</b>	550HP (410)
<b>Generator Rating kW (kVA)</b>	375kW (469)
<b>Maximum AMP Rating</b>	616
<b>Fuel Usage (field gas)</b>	44 Mcf/day at 50%, 66 Mcf/day at 80%
<b>Fuel Usage (propane)</b>	592 gal/day at 50%, 884 gal/day at 80%
<b>Size of Unit</b>	16'x 8'6" - tongue is additional 4'9"
<b>Weight of Unit</b>	13,800 lbs

## 1.2 MEGAWATT WAUKESHA ENGINE

With over 100 years of engine design, development and manufacturing experience, GE's Waukesha gas engines are redefining oil field power generation in drill rig applications with a non-road EPA mobile certified solution that provides diesel-like performance, fuel flexibility to run on natural gas/field gas and low emissions output for excellent engine performance.



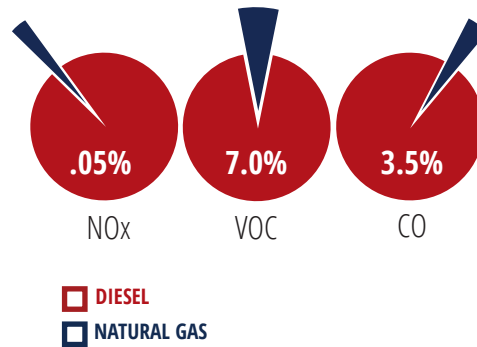
*\* specifications available upon request*

# NATURAL GAS-FIRED GENERATORS VS. DIESEL GENETRATORS

## COMPETITORS

Our competitors use an out-dated technology that costs more, emits a significant amount of pollutants into the air, creates supplementary vehicle traffic, and does nothing to address flared gas. The Best Available Control Technology (BACT) for generators, in general, represents a natural gas-fired generator equipped with an air fuel ratio controller and nonselective catalytic reduction meeting NOx emissions of 1.0 g/hp-hr. Diesel generators under Tier 3 standards, however, only have to meet NOx emissions of 6.9 g/hp-hr.

## EMISSIONS TEST

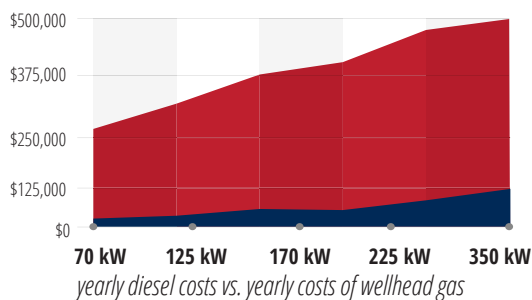


## PERCENTAGE OF FLARE GAS CONSUMED



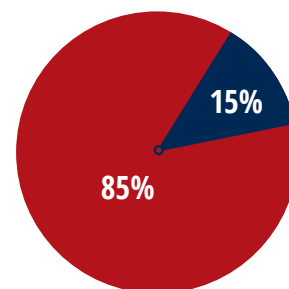
*\*based on 115 Mcfd as total volume flared and unit at 50% load*

## COST ANALYSIS



■ **DIESEL** - COST OF DIESEL DELIVERED @\$4/GALLON  
■ **NATURAL GAS** - ASSUMING WELL-GAS COST IS \$2.00/MCF

## MARKET SHARE



■ **DIESEL GENERATORS**  
■ **NATURAL GAS GENERATORS**

SOME OF THE GREAT COMPANIES RELYING ON MESA POWER

# CURRENT MESA MSA'S



ConocoPhillips

Continental  
RESOURCES

Chesapeake  
ENERGY

DIAMONDBACK  
Energy

HUNT  
OIL COMPANY

RKI  
Exploration

PIONEER  
NATURAL RESOURCES

WPXENERGY.

devon

EXCO

MACK  
Energy Corporation

Rosetta  
RESOURCES

eog

OXY

AMERICAN ENERGY  
PARTNERS

GASTAR

QMN

SANCHEZ  
OIL & GAS CORPORATION

ConocoPhillips

CONCHO

CIMAREX

GT  
GTUIT™

PETRO-HUNT  
L.L.C.

RESOURCE DEVELOPMENT, LLC  
TRACKER

Apache

ADVANTAGE  
PIPELINE

CROWNQUEST  
CROWNQUEST OPERATING, LLC

HENRY

REGENCY  
ENERGY PARTNERS

TRF  
ENERGY SOLUTIONS

Unit Corporation

TRIANGLE  
PETROLEUM CORPORATION

VANGUARD  
NATURAL RESOURCES, LLC

VENADO  
OIL & GAS

WARD PETROLEUM

WAVE  
PETROLEUM  
OPERATING, LLC



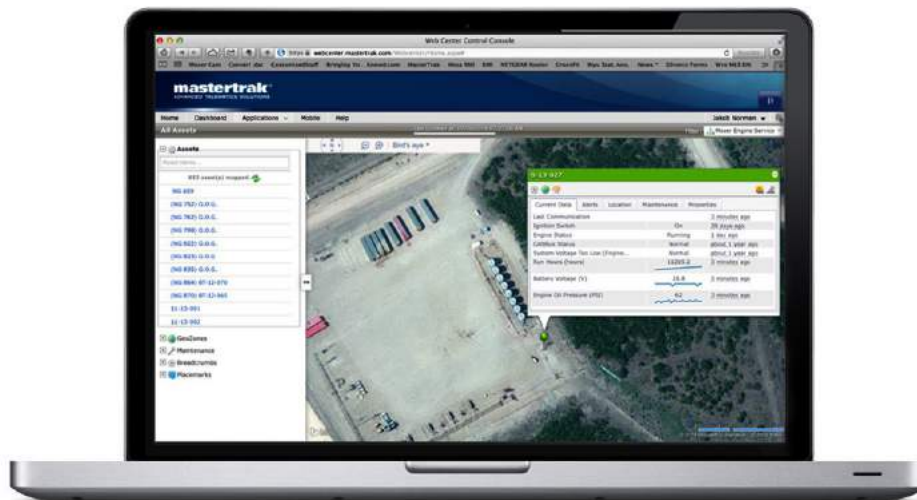
---

# SHOWCASE TELEMETRY

---

## real time access to fleet information

- Real time telemetry is available to track the assets in your fleet.
- Budget telemetry is included in lease.
- Solutions what you have wanted, but not always had access to.
- Result more real time information on the units that you rely on.



---

# SHOWCASE MOBILE

---

## mobile access to fleet

Mobile telemetry is also available on mobile devices to ensure members of your team and our team always have the access they need. Data points include, but are not limited to:

- On/Off
- Geo Location
- Trouble Alerts
- Maintenance Reminders
- Run Hours
- Engine Status
- Temperature





---

## IN THE PRESS

---

*"A Casper company is selling a product that it believes could address one of Wyoming's burning energy issues - and business is booming...the engine changes the way operators deal with unwanted natural gas from oil wells..."*

**Casper Star-Tribune, June 2013**

*"A growing Casper company has developed a product that solves two problems at once for the oil and gas industry: the need for power at the well site, and the desire to not flare well gas."*

**Wyoming Business Report, May 2015**

*"Well what they're doing right here in Casper I think fits very well with some of the legislation I've been trying to develop in terms of using natural gas more efficiently." Senator John Barrasso*

**KCWY13 Report, August 2015**

*"Jakob Norman's Evansville-based company has been in business for less than a year and already may expand to Indonesia, China and Egypt. He's now serving customers across North America ..."*

**Casper Star-Tribune, May 2015**

---

## CLIENT TESTIMONIALS

---

*"I love y'all."*

*"The relationship and partnership with Mesa is important."*

**CrownQuest**

*"Your runtime has been excellent and we appreciate Mesa's flexibility on all levels."*

**Oxy**

*"We are very happy with Mesa's service and your reliability. Everything has been going great, we appreciate you working with us on pricing during the downturn."*

**ConocoPhillips**



---

307.472.6372  
1.844.247.MESA  
WWW.247MESA.COM

MESA NATURAL GAS SOLUTIONS, LLC  
260 CRAIG THOMAS BLVD.  
EVANSVILLE, WY 82636